

# Prisma Access Insights At a Glance



## Introducing Prisma Access Insights

Prisma™ Access Insights provides a comprehensive platform for global visibility and monitoring with our Prisma Access service. Using advanced end user-level monitoring and role-based access rights, it offers a seamless, latency-free network experience tailored to users' specific network demands and work responsibilities. This allows administrators to pinpoint network and user experience issues—whether caused by end user devices, network configuration, or applications—from a single-pane, cloud-delivered management interface. Prisma Access Insights will be available to all current Prisma Access customers in August 2020 as a public beta release.

## Network and Security Challenges with Cloud and Mobility

Organizations transforming their networks and security to meet the demands of an evolving workforce, pursue digital transformation initiatives, and grow their cloud presence face a number of challenges. On-premises performance management solutions don't provide network monitoring and visibility for distributed cloud-based environments, nor can they identify issues at different measurement points. Organizations also struggle with manual correlation of information—a task that is cumbersome, time-consuming, and error-prone—across the various management products they have deployed. Traditional solutions lack centralized visibility to help pinpoint network and user experience issues at a glance, and the various point products available are both complex and cost-prohibitive.

## Why Prisma Access Insights?

Prisma Access Insights solves the challenges of optimizing network-wide connectivity with advanced visibility, proactive assistance, capacity planning, and auto-remediation services across managed and unmanaged devices. This augments the native software-defined wide area network (SD-WAN) fabric of Prisma Access secure access service edge (SASE) for centralized management and connectivity diagnostics.

The capabilities of Prisma Access Insights include:

- **Advanced visibility and monitoring**—single-pane-of-glass visibility and monitoring for mobile users, remote networks, and all apps, anywhere.
- **AI- and ML-based monitoring**—faster, higher fidelity decisions with real-time visibility. Recommended actions based on anomalies and capacity planning tools that provide AI- and ML-based historical trends and future predictions.
- **Purpose-built solutions**—role-based, personalized experiences that enable your entire organization, from network administrators to CIOs, to drive business outcomes.

## Mobile Users Dashboard

Get a bird's-eye view of your Prisma Access mobile user deployment. See your top alerts, how many users are currently connected, which version of the GlobalProtect™ app they are on, and the health of the Prisma Access locations to which they are connected.

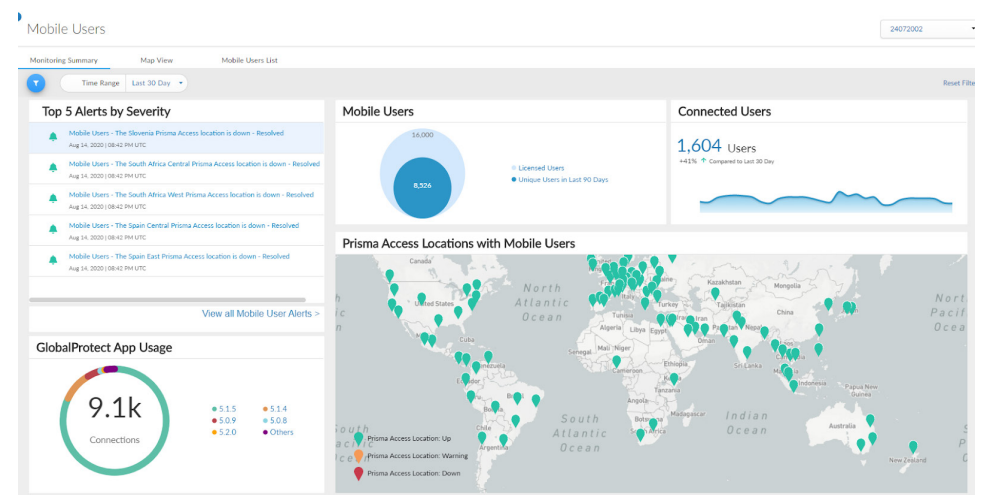


Figure 1: Mobile Users dashboard—Monitoring Summary

# Prisma Access Insights At a Glance



## Mobile User Connections

See where all your users are connected in the world and the specific Prisma Access location to which they are connecting. You can see whether they are connecting to the most optimal location, how their method of connectivity is affecting their experience, which OS device they are on, and how many devices they have connected.

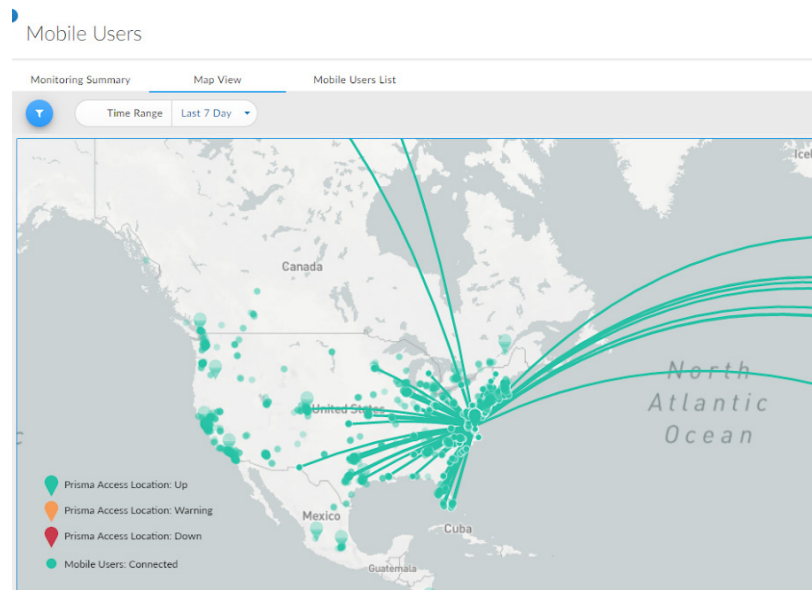


Figure 2: Mobile Users dashboard—Map View

## Remote Networks Dashboard

A summarized view of your remote networks deployment includes top alerts that may require your attention, health of tunnels and sites, trends of top sites, and bandwidth utilization over time.

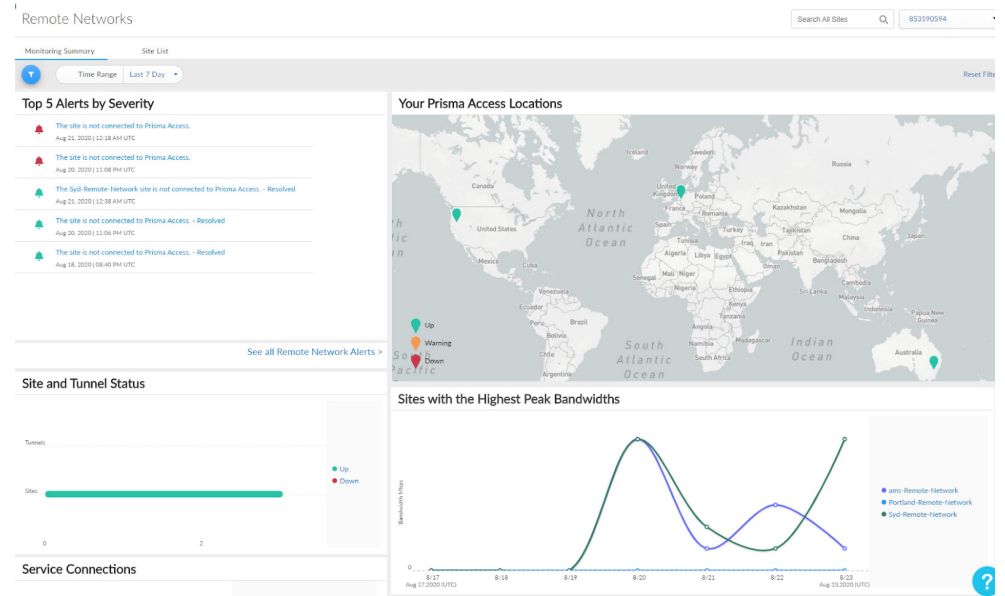


Figure 3: Remote Networks dashboard—Monitoring Summary

# Prisma Access Insights At a Glance



## Site Details

Drill down into the details of each site and determine overall health based on tunnel status, bandwidth consumption, and connectivity trends. You can easily see if recent configuration changes are affecting site performance.

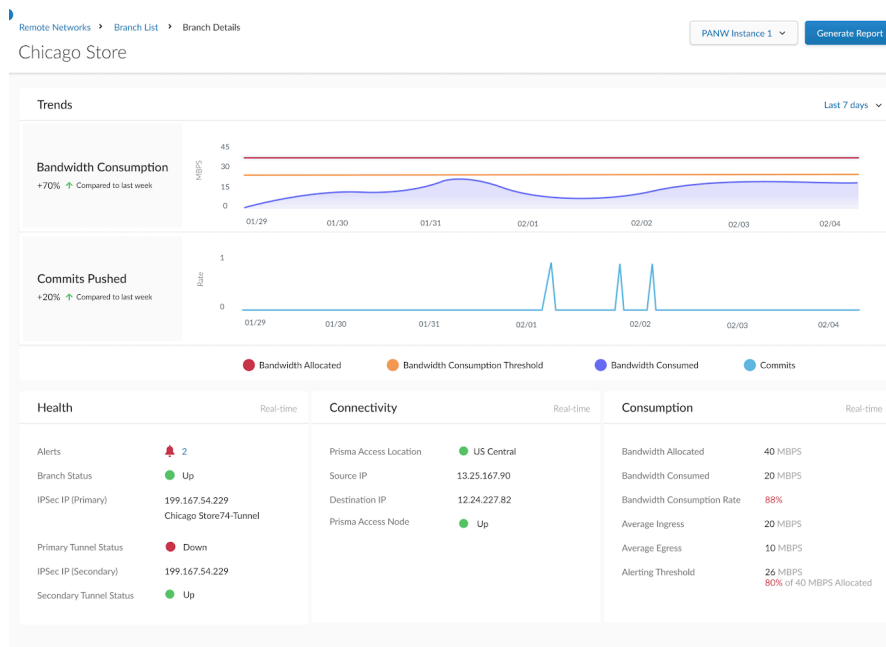


Figure 4: Remote Networks dashboard—Branch Details

## The Power of Prisma Access Insights

Prisma Access Insights introduces a number of powerful capabilities that provide advanced visibility, proactive assistance, and capacity planning.

### Advanced Visibility

- **Deployment status**—detailed views of remote networks, tunnels, mobile users, and service connections.
- **Network utilization**—the ability to monitor bandwidth utilization in the aggregate, over time, and by branch.
- **User connectivity**—current user connections and use trends, as well as GlobalProtect and OS application versions.
- **Executive summary view**—overall deployment status, alerts, and capacity planning trends.

### Proactive Assistance

- **More than 20 alerts of varying severity**—contextualized alerts that warn of service-related issues, such as tunnel failures.
- **Consolidated alert views**—a centralized view of all network alerts, with in-app and email notifications.

### Capacity Planning

- **License consumption**—current and projected consumption for remote networks and mobile users compared with allocated and purchased bandwidth.
- **Consumption trends**—current and projected trends for bandwidth consumption and mobile user deployment.

Learn more at [paloaltonetworks.com/prisma/access](https://paloaltonetworks.com/prisma/access).